

MY PD JOURNEY



POSITIVE PROGRESS FOR
PEOPLE WITH PARKINSON'S



THE PARKINSON'S DISEASE COMPOSITE SCALE

WHAT IS MY PD JOURNEY?

A multi-stakeholder European coalition led by the European Parkinson's Disease Association (EPDA).

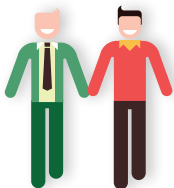


WHAT IS THE COMPOSITE SCALE?

The My PD Journey coalition, on behalf of the EPDA, has developed the Parkinson's Disease Composite Scale – a simple new scale that measures the severity of symptoms experienced by people with Parkinson's in a timely way. It provides a holistic overview of motor and non-motor symptoms and enables clinicians to continually monitor the individual's condition.

WHY DEVELOP A NEW SCALE?

Existing scales used by neurologists currently explore different aspects of Parkinson's, but do not offer a comprehensive overview of the individual's condition. The development of the new Composite Scale was therefore urgently needed as it combines motor symptoms, non-motor symptoms and treatment-related complications; it is also simple and relatively fast to use. Crucially, it is designed to complement – rather than replace – existing scales.



WHO LED THE DEVELOPMENT OF THE COMPOSITE SCALE?

The development of the Composite Scale was led by Parkinson's specialist neurologists Professors Pablo Martinez Martin (Spain) and Fabrizio Stocchi (Italy) in collaboration with the My PD Journey coalition.

WHO IS IT FOR?

The Composite Scale was designed as a tool to be used primarily by neurologists and other healthcare professionals familiar with Parkinson's. It is not a tool for self-assessment, but can help people with Parkinson's to better understand the complexity of their condition.



WHAT DOES IT MEASURE?

The Composite Scale measures motor symptoms, such as tremors, rigidity, bradykinesia and postural instability, as well as non-motor symptoms, such as depression, anxiety, sexual dysfunction, constipation and urinary problems.

The Composite Scale also grades the relative importance of particular symptoms, taking into account patient perspectives, which are important in the delivery of timely and effective treatment and care.

HOW SHOULD THE SCALE BE USED?

The Composite Scale should be used in clinical settings and can be conducted in roughly 15 to 20 minutes, as such freeing up time within the consultation to discuss other things important to the individual.



HOW AND WHEN WILL THE COMPOSITE SCALE BE VALIDATED?

Work began on the Composite Scale in September 2014. The initial pilot study and a first validation study were completed in 2015. The first validation study indicated that the scale was a feasible, acceptable, reproducible, valid and precise instrument for more holistic measurement of Parkinson's symptoms. A second and more extensive validation study, aimed at reaffirming the first study's findings, is currently underway. Professor Fabiana Radicati (Italy), one of the authors of the scale, is the clinical trial coordinator of this wider validation study. It is being undertaken in 22 centres across Europe and will be completed in November 2017, with a report due to be published in 2018.

In parallel, My PD Journey is working with neurological and clinical bodies, policymakers, and patient organisations to promote the use of this new, innovative tool across Europe.

FEASIBLE &
ACCEPTABLE



VALID



RELIABLE



PRECISE

HOW CAN I LEARN MORE?

My PD Journey is a first-of-its-kind multi-stakeholder project for people with Parkinson's in Europe, led by the EPDA. The Parkinson's Disease Composite Scale is a My PD Journey project, and as such belongs to the EPDA.

Visit www.epda.eu.com for more information about Parkinson's disease and the EPDA work programme. For more specific details about My PD Journey, go to www.mypdjourney.com or email secretariat@mpdj.eu.

www.epda.eu.com

www.mypdjourney.com

